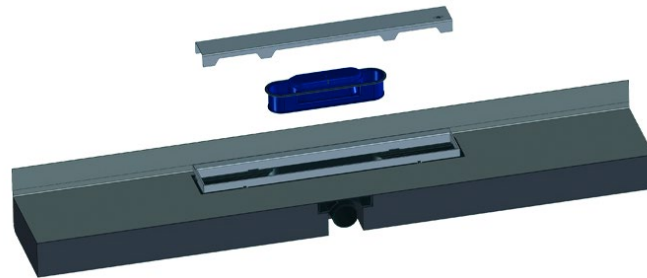


## Info sheet

### Shower channel HL531Prblue series, now with Primus blue



The well-known and proven shower channel HL531 will be delivered in 2023 in a new and improved version called HL531Prblue. In addition to technical improvements such as the unique Primus blue Hybrid odor trap system, the shower channel is also available in 3 additional colors.

Here are the innovations in detail:

- Odor trap Primus blue

**The new and patented Primus blue trap system is a further development of the proven Primus trap. The hybrid siphon, i.e. mechanical odor barrier plus water seal, offers even more protection against unpleasant odors from the sewer. With a tightness at overpressure up to +800 Pascal and at negative pressure to -400 Pascal, Primus blue offers greater safety than conventional water-odor traps with 50 mm sealing water. Another benefit is the function of backflow tightness up to a pressure of 0.5 mWs. This effectively prevents the backflow of wastewater in the case of awkwardly laid drainage pipes (e.g. from the bathtub).**

The drainage performance remains the same compared to the old Primus trap, but shows a much more stable drainage behavior.



- Available in 4 different colors
- The selected stainless steel covers "Standard", "Design" and "Individual", as well as the stainless steel frame are available in the following PVD-coated colors: stainless steel matt (as before), brass matt, rose gold matt and black matt.



Stainless steel matt



black matt



redgold matt



brass matt

- Low installation height

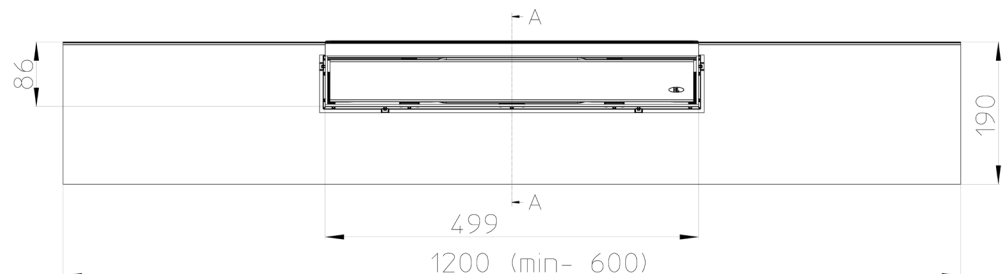
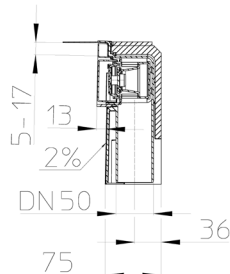
The installation height of the shower channel is now 75 mm instead of 79 mm!

The slope on the shower element has been reduced from 3% to 2%.

- Flexible wall connection

The plastic wall edge is omitted and replaced by the sealing fleece. Unevenness on the wall can thus be easily compensated. The sealing fleece is embedded in the composite seal as usual and thus ensures maximum security for the seal.

Schnitt A-A



Price: same as HL531

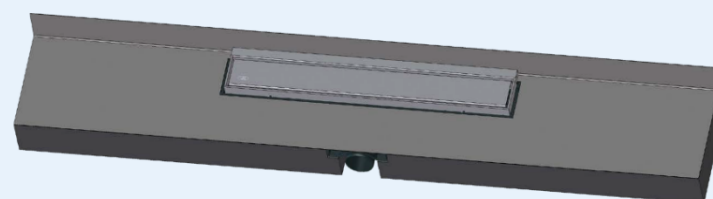
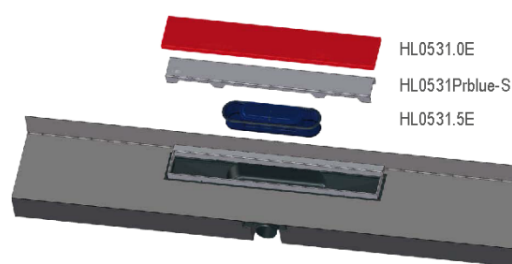
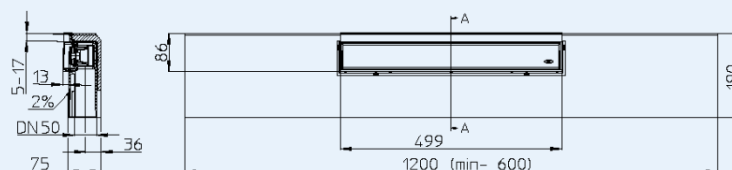
Shipping: May 2023

## HL531Prblue Shower channel Primus blue with stainless steel frame and cover, HEIGHT 75 MM!

### HL531Prblue.1(.2)(.3) Shower channel Primus blue with stainless steel frame in color, HEIGHT 75 MM !

#### Data

Description	Shower channel, integrated in an EPS element with stainless steel frame and cover. Surface is waterproof fleece-laminated. For installation on the wall.
Drainage capacity	accumulation height 10 mm 20 mm 0.5 l/s 0.6 l/s
Material	PP/ABS/EPS-40/ stainless steel V2A
Inlet	Stainless steel frame 500 x 86 x 13 mm, cover 486 x 56 mm
Outlet	DN50 horizontal
Standard	EN 1253
Odor trap	New Primus blue, combined trap with sealing water and mechanical odor barrier (absolutely odor-tight even without water). Backflow-proof up to 50 cm accumulation height.
Installation	The exact adjustment of the shower channel is made by simply cutting the EPS element to length on site. Length from 600mm to 1200mm, width 190 mm, height 75mm incl. 2% slope to the wall. For Wall tiles from 5 mm to 17mm and floor tiles 13mm (incl. adhesive). Can be extended with HL531V. See also installation movie at <a href="http://www.hl.at">www.hl.at</a>

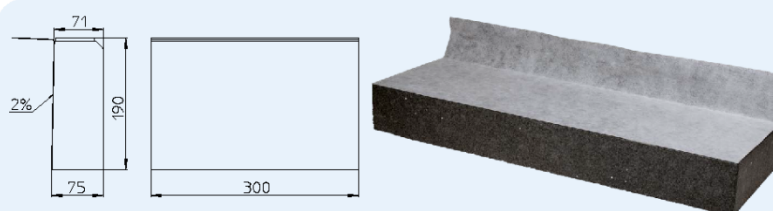


HL-No.	Visible part	Dimension	Frame height	Material	Weight	EAN	Piece/Package
531Prblue	Cover Standard Stainless steel mat	1200 x 190 x 75 mm	13	PP/EPS-40/stainless steel V2A			1
531Prblue-I	Cover Individual Stainless steel mat	1200 x 190 x 75 mm	13	PP/EPS-40/stainless steel V2A			1
531Prblue.0	Stainless steel matt, without cover	1200 x 190 x 75 mm	13	PP/EPS-40/stainless steel V2A			1
531Prblue.1	PVD-coated black matt, without cover	1200 x 190 x 75 mm	13	PP/EPS-40/stainless steel V2A			1
531Prblue.2	PVD-coated rose gold matt, without cover	1200 x 190 x 75 mm	13	PP/EPS-40/stainless steel V2A			1
531Prblue.3	PVD-coated brass matt, without cover	1200 x 190 x 75 mm	13	PP/EPS-40/stainless steel V2A			1

## HL531V Elongation element for HL531Prblue

#### Data

Material	EPS-40
Additional information	To elongate shower channel HL531Prblue, e.g. for multiple shower facilities. May be cut to any length, with fleece-laminated surface.



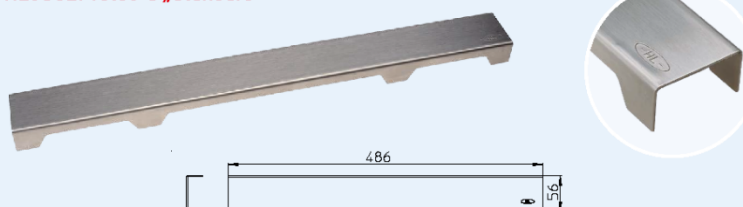
HL-No.	Material	Dimension	Weight	EAN	Piece/package
531V	EPS-40	300 x 190 x 75 mm			1

**HL0531Prblue-S** Cover Standard for shower channel HL531Prblue, available in 4 different colors  
**HL0531Prblue-D** Cover Design for shower channel HL531Prblue, available in 4 different colors  
**HL0531Prblue-I** Cover Individual for shower channel HL531Prblue, available in 4 different colors

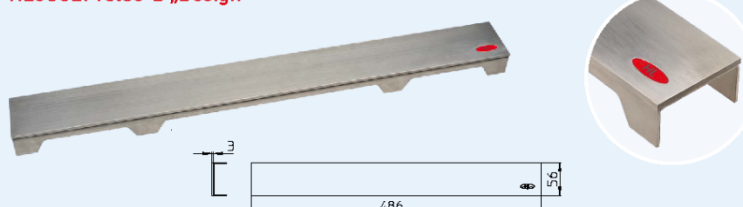
## Data

Material	Stainless steel V2A, Colors: PVD-coated
Dimensions	HL0531Prblue-S: 486 x 56 mm HL0531Prblue-D: 486 x 56 mm HL0531Prblue-I: Gap for tile: 480 x 50 mm, depth 12 mm
Load classification	K3 - max. 300 kg

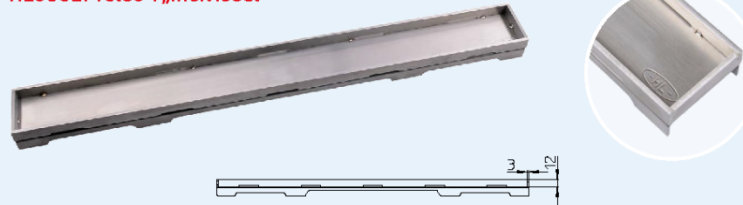
### HL0531Prblue-S „Standard“



### HL0531Prblue-D „Design“



### HL0531Prblue-I „Individual“



HL-No.	Visible part / Color	Dimension	Material	Weight	EAN	Piece/Package
HL0531Prblue-S	Stainless steel mat Standard	486 x 56 mm	PP/EPS-40/stainless steel V2A			1
HL0531Prblue-S.1	PVD-coated black mat Standard	486 x 56 mm	PP/EPS-40/stainless steel V2A			1
HL0531Prblue-S.2	PVD-coated rose gold mat Standard	486 x 56 mm	PP/EPS-40/stainless steel V2A			1
HL0531Prblue-S.3	PVD-coated brass mat Standard	486 x 56 mm	PP/EPS-40/stainless steel V2A			1
HL0531Prblue-D	Stainless steel mat Design	486 x 56 mm	PP/EPS-40/stainless steel V2A			1
HL0531Prblue-D.1	PVD-coated black mat Design	486 x 56 mm	PP/EPS-40/stainless steel V2A			1
HL0531Prblue-D.2	PVD-coated rose gold mat Design	486 x 56 mm	PP/EPS-40/stainless steel V2A			1
HL0531Prblue-D.3	PVD-coated brass mat Design	486 x 56 mm	PP/EPS-40/stainless steel V2A			1
HL0531Prblue-I	Stainless steel mat Individual	486 x 56 mm	PP/EPS-40/stainless steel V2A			1
HL0531Prblue-I.1	PVD-coated black mat Individual	486 x 56 mm	PP/EPS-40/stainless steel V2A			1
HL0531Prblue-I.2	PVD-coated rose gold mat Individual	486 x 56 mm	PP/EPS-40/stainless steel V2A			1
HL0531Prblue-I.3	PVD-coated brass mat Individual	486 x 56 mm	PP/EPS-40/stainless steel V2A			1